



# North Family HUBs

# North Family Hubs June-July Timetable

## Other community venues we deliver at:

**Adwick Primary Lower School**  
Stafford Road Woodlands  
DN6 7LW

**Bullcroft Memorial Hall**  
Chestnut Avenue Carcroft  
DN6 8AP

**Highfields Primary School**  
Coppice Road, Highfields, DN6 7JB

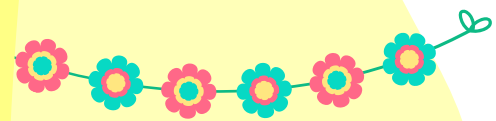
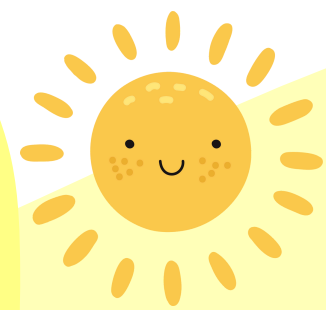
**Scawthorpe Community Centre**  
Amersall Road, Scawthorpe  
DN5 9PQ

**Scawsby Community Centre**  
Barnsley Road, Scawsby, DN5 8QQ

**Sprotbrough Community Library**  
Sprotbrough Road, Sprotbrough  
DN5 8BA

**Sprotbrough Edmunds Scout Group Hall**  
Car Park,  
Anchorage Lane,  
Doncaster  
DN5 8DT

**We can't wait to see you!**



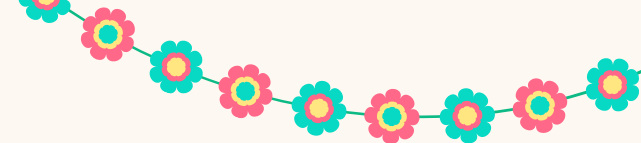
Discover the sessions, activities, support and events taking place this Summer for families of children aged 0-5 and beyond!



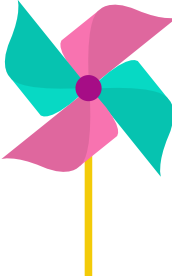



**Join us at:**  
Adwick Family Hub  
Askern Family Hub  
Bentley Family Hub



Proudly supporting families in North Doncaster including:  
Bentley • Askern • Adwick • Woodlands • Highfields  
Roman Ridge • Norton • Carcroft • Sprotbrough • Toll Bar

[www.doncaster.gov.uk/familyhubs](http://www.doncaster.gov.uk/familyhubs)



	Mondays	Tuesdays	Wednesdays	Thursdays	Fridays	
Adwick	<b>Stay &amp; Play</b> <b>9:30am - 11:00am</b>	<b>First Friends</b> <b>1:00pm - 2:30pm</b>  <b>Counselling</b> By Appointment Only	<b>Busy Babies</b> <b>9:30am - 11:00am</b>		<b>Childminders</b> <b>9:00am - 11:00am</b>  <b>Counselling</b> By Appointment Only	
Askern	<b>Busy Babies</b> <b>9:30am - 11:00am</b>  <b>Nature Explorers</b> <b>1:30pm - 2:30pm</b>	<b>Stay &amp; Play</b> <b>9:30am - 11:00am</b>	<b>Sensory room</b> Available to book Monday - Friday Call 01302 737099 to book your slot.	<b>First Friends</b> <b>1:00pm - 2:30pm</b>  <b>Counselling</b> By Appointment Only	<b>Stay &amp; Play</b> <b>9:30am - 11:00am</b>	
Bentley	<b>Dads Time</b> <b>9:30am - 11:00am</b>  <b>Busy Babies</b> <b>1:30pm - 3:00pm</b>	<b>Lets Play Together</b> <b>10:00am - 10:45am</b> (Invite Only) <b>Baby Massage</b> <b>9:30am - 11:30am</b> (Invite Only) <b>LIGHT Group</b> <b>10:30am - 12:30pm</b> (Invite Only) <b>Breast Start</b> <b>1:00pm - 2:30pm</b>	<b>Stay &amp; Play</b> <b>9:30am - 11:00am</b>  <b>Counselling</b> By Appointment Only		<b>Counselling</b> By Appointment Only  <b>Sensory room</b> Available to book Monday - Friday Call 01302 737350 to book your slot.	<b>First Friends</b> <b>1:00pm - 2:30pm</b>  <b>Wriggle, Rhyme &amp; Story Time</b> <b>1:30pm - 2:30pm</b>
Other venues	<b>Breast Start</b> <b>9:30am - 11:00am</b> St Edmunds Scout Group Hall, Anchorage Lane, Sprotbrough DN5 8DT	<b>Stay &amp; Play</b> <b>9:00am - 10:30am</b> Highfields Primary School, Market Street, Highfield, DN6 7JB  <b>Stay &amp; Play</b> <b>1:00pm - 2:30pm</b> Bullcroft Memorial Hall, Chestnut Avenue, Carcroft, DN6 8AP	<b>Wriggle, Rhyme &amp; Story Time</b> <b>10:00am - 10:45am</b> Adwick Primary Lower School Stafford Road Woodlands, DN6 7LW		<b>Wriggle, Rhyme &amp; Story Time</b> <b>9:15am - 10:15am</b> Sprotbrough Library Sprotbrough Rd, DN5 8BA  <b>Baby Fun</b> <b>1:30pm - 2:30pm</b> Scawsby Community Centre, Barnsley Rd, Scawsby, DN5 8QQ	
						
						
	<b>First Friends</b> <b>1:00pm - 2:30pm</b> Bullcroft Memorial Hall, Chestnut Avenue, Carcroft, DN6 8AP	<b>Busy Babies</b> <b>1:30pm - 2:30pm</b> Scawsby Community Centre, Barnsley Rd, Scawsby, DN5 8QQ				



# Sessions & Activities

North  
Family  
HUBs

## **First Friends** (*Birth to Crawling*)

Come and play together within a safe informative and stimulating environment, which is welcoming and supportive to all. Health and development advice is available from a Nursery Nurse.

---

## **Baby Fun** (*Birth to Crawling*)

Enjoy some quality time with your baby, exploring lots of sensory activities as well as making new friends.

---

## **Busy Babies** (*Crawling to Walking*)

Join us for our Busy Babies session, where you and your mobile baby can explore our environment. It includes sensory and messy play, music and instruments, physical toys and games, books, stories and singing and soft play. This is a good follow on session from Baby Fun and First Friends.

---

## **Wriggle, Rhyme & Storytime** (*0 - 5*)

Enjoy our fun and interactive session where children can explore music, rhymes and stories with their parent/carer using props and sensory resources.



## **Stay & Play** (*0-5*)

Our Stay and Play session offers a fun session for you and your child to play and learn new skills with a range of fun filled activities, that includes sensory, outdoor, messy play, music and instruments, physical toys and games, book & stories, singing and snack time.

---

## **Childminder Drop - in** (*All Welcome*)

Run by Ofsted Registered Childminders for the children they care for to play in a stimulating, safe and fun environment. This group also provides the opportunity for networking between Childminders.

---

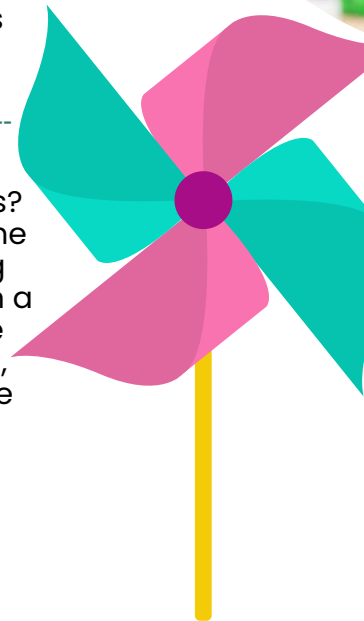
## **Lets Play Together** (*Invite Only*)

This session is by invite only. A nurturing group for young children to provide extra play opportunities for social interaction with a focus on attention, listening and early communication skills.

---

## **Nature Explorers** (*Walking - 5*)

Do you and your little one enjoy being outdoors? Then we have the perfect session for you ! Come and join us for this interactive session exploring the outdoors. We will be making dens, going on a nature hunt, leaf mark making and many more exciting nature activities. Hope to see you soon, please remember to dress appropriately for the outdoors.



# Sessions & Activities

## **Infant Massage** *(from 6 weeks)*

You will be invited to book onto these sessions by your Health Visitor - You will learn gentle massage techniques with your baby, which will support bonding and attachment, improve baby's skin and sleep, aid digestion and help reduce colic. Call the Health team for more information on 0300 021 8997.

## **Breast Start**

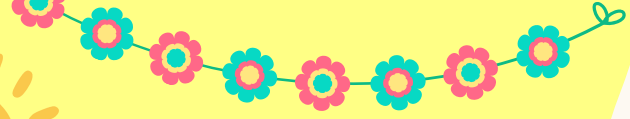
A friendly and relaxed environment that gives an opportunity to meet other mums, share experiences and build your confidence to breast feed, with support from peer supporters and a Trained Health Professional.

## **LIGHT Support Group**

Light is a pre- and post-natal peer support group providing support around emotional wellbeing and mental health of mums and their families. This group is bookable in advance by calling 01144 388962.

## **Other Services and Support**

You can also access information and support around volunteering, counselling services, how to join our parent groups or become a parent champion, access wider feeding support and much more. For more information about each of these, visit [www.doncaster.gov.uk/familyhubs](http://www.doncaster.gov.uk/familyhubs)



North  
Family  
HUBs

Call into your local Family Hub and speak to a member of staff, or search for your local Family Hub on Facebook for all the latest updates and don't forget to follow us!



## Our venues

### Adwick Family Hub

Central Avenue,  
Woodlands, DN6 7RU  
01302 737717

### Askern Family Hub

Spa Pool Road, Askern  
DN6 0HZ  
01302 737099

### Bentley Family Hub

The Avenue, Bentley  
DN5 0NP  
01302 737350

**Become a member at your local Family Hub!**

For more information, visit:  
[DONCASTER.GOV.UK/FAMILYHUBS](http://DONCASTER.GOV.UK/FAMILYHUBS)

